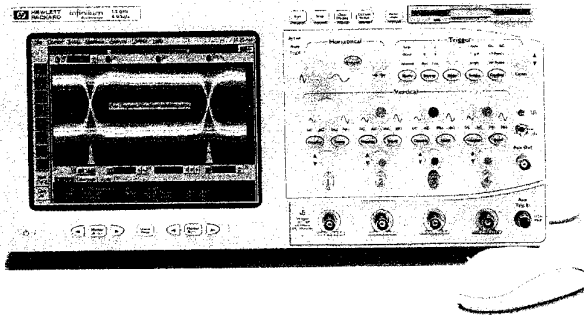


Oscilloscopes

Infiniium Oscilloscopes

- 600-MHz, 1.5-GHz bandwidth
- 2- or 4-channel models
- Up to 8 USds/s sample rates
- Simple analog-like front panel
- Windows 98-ready graphical user interface
- Built-in information system
- Voice control option



Performance You Can Use

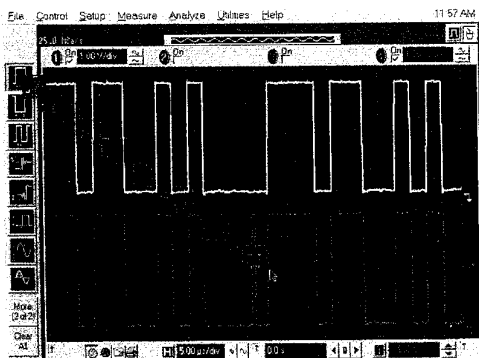
HP Infiniium oscilloscopes combine a simple, analog-like front panel, a familiar Windows 98 graphical user interface, and a built-in information system, to make high-performance scope features accessible and uncomplicated. We call it usable performance. We think you'll call it a significant improvement.

Simple Analog-like Front Panel

Dedicated scale and offset knobs for each vertical channel (see photo above), color coded with the waveform colors, provide intuitive scope operation. Backlit LEDs on the front panel tell you at a glance how the scope is set up. A single QuickMeas button gives you four of your favorite measurements with statistics at the push of a button.

Familiar Drag-and-Drop User Interface

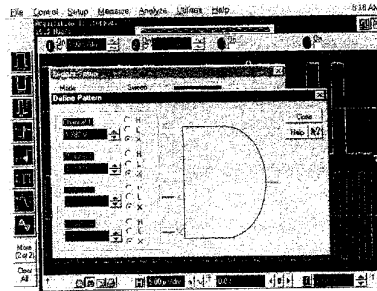
Infiniium oscilloscopes employ a graphical user interface based on Windows 98. Pull down menus give you easy access to advanced features. And many advanced features can be used without accessing the menus. For instance, drag-and-drop measurements (see photo), direct control of the waveforms, and zooming in on an area of interest can easily be performed using the standard mouse.



Just drag and drop an icon from the measurement toolbar onto the portion of the waveform you want to measure and the measurement appears instantly on screen.

Built-in Information System

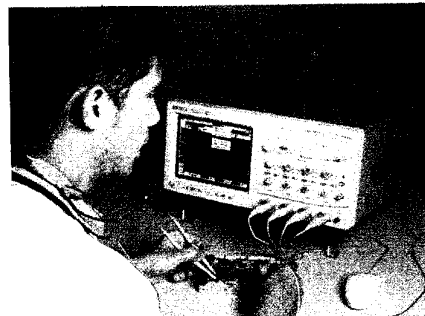
Infiniium's built-in information system puts measurement assistance at your fingertips. A Setup Guide walks you step-by-step through making 24 common complex measurements like jitter, runt triggering, etc. In addition, context-sensitive help is available to define all features available in the Windows 98 dialog boxes.



Graphical dialog boxes make it easy to set up HP Infiniium's powerful triggering capability

New Advanced Triggering

In addition to standard trigger modes such as edge, glitch, delay, logic, state and video, HP's violation trigger adds capabilities such as rise-time trigger, fall-time trigger, setup and hold-time trigger and runt trigger to capture these elusive violations. And Infiniium's graphical dialog boxes make it easy to set up advanced trigger conditions (see photo).



You can use both hands for probing when you control the scope's front-panel functions with your voice.

With Voice Control Option

Infiniium can now be controlled with Voice Control (option 200). Using the included microphone, users can now control front panel functions by speaking into a microphone, allowing hands-free operation of the scope. This is an extremely valuable option for users who need both hands to probe fine-pitch, surface mount parts.

LAN Connectivity

Infiniium makes it easy to document and share your results with others. Simply print out screen shots to high quality color printers connected to your network. You can also share screenshot files with other Infiniium users. Finally, you can mount Infiniium's hard disk drive to your PC over the network to easily transfer files for analysis or documentation.

Internal Hard and High Capacity Floppy Disk Drives

Use the internal 3.2 GB hard disk drive or the 3.5-inch LS-120 120 MB floppy disk drive (compatible with standard 1.44 MB floppies) to store instrument setups, waveforms, or screen images. Images can be stored as BMP, TIF, GIF, PCX, PS or EPS files for easy import over LAN or snakerket into various documentation programs.

Easy Probing

A full line of compatible passive, active and differential probes are available for Infiniium. These probes contain the AutoProbe interface, which completely configures Infiniium for the proper attenuation ratio, input impedance, probe power and offset range, if needed. See the Infiniium Probes and Accessories datasheet for more information (5968-3832).

On-the-Trackball Option

In addition to the standard mouse and keyboard supplied with Infiniium, a clip-on trackball is available if you don't have available bench space. The trackball clips onto the side of the instrument.

HP 54810A
HP 54815A
HP 54820A
HP 54825A
HP 54835A
HP 54845A

Oscilloscopes

12

Infinium Oscilloscopes

P 54810A
P 54815A
P 54820A
P 54825A
P 54835A
P 54845A

General Specifications Chart for Infinium Oscilloscopes

	HP 54810A, 54815A, 54820A, 54825A	HP 54835A	HP 54845A
Bandwidth	500 MHz	1 GHz	1.5 GHz
Channels	HP 54810A/820A: 2 HP 54815A/825A: 4	4	4
Sample rate	HP 54810A/820A: 1 GSa/s on each channel HP 54815A/825A: 2 GSa/s on each channel	2 channel mode: 4 GSa/s 4 channel mode: 2 GSa/s	2 channel mode: 8 GSa/s 4 channel mode: 4 GSa/s
Memory/channel	32K	2 channel mode: 64K 4 channel mode: 32K	
Vertical resolution	8 bits; 12 bits or greater with averaging	8 bits; 12 bits or greater with averaging	
Input voltage ranges	1 mV/div to 5 V/div	1 M Ω : 2 mV/div to 2 V/div 50 Ω : 2 mV/div to 1 V/div	
Input Z, coupling	50 Ω , 1 M Ω , dc, ac (1 M Ω), ground		
Trigger enhancements	Edge, glitch, pattern, state, delay by time, delay by events, violation (runt, setup/hold time, pulse width, transition), video, line		
Measurements	27 automatic waveform parameter measurements with statistics		
Math functions	4 functions, F1-F4. Select from add, subtract, multiply, divide, invert, magnify, Vs., min., max., integrate, differentiate, FFT magnitude		
Other analysis functions	Histograms (vertical/horizontal), automask capability, eye diagram measurements, variable persistence, dual density infinite persistence, color grade persistence waveforms		
Storage	Instrument setups, waveforms, screen images can be stored to either the 3.2 GB hard disk or the LS-120 120 MB high capacity floppy disk drive. 4 nonvolatile waveform memories.		
Display	Large 8.4-inch color active matrix LCD display		
Display annotation	Up to 12 labels, with up to 100 characters each, can be created with the standard keyboard and inserted into the waveform display area		
Waveform update rate	>2,000 waveforms/sec		
Printer support	Full support of HP DeskJet and LaserJet printers. LAN or Centronics interfaces.		
Price	HP 54810A: \$8,995 HP 54815A: \$15,995 HP 54820A: \$12,495 HP 54825A: \$18,995	\$22,995	\$29,995

For more detailed information, refer to the HP Infinium Oscilloscopes technical datasheet (5968-2415).